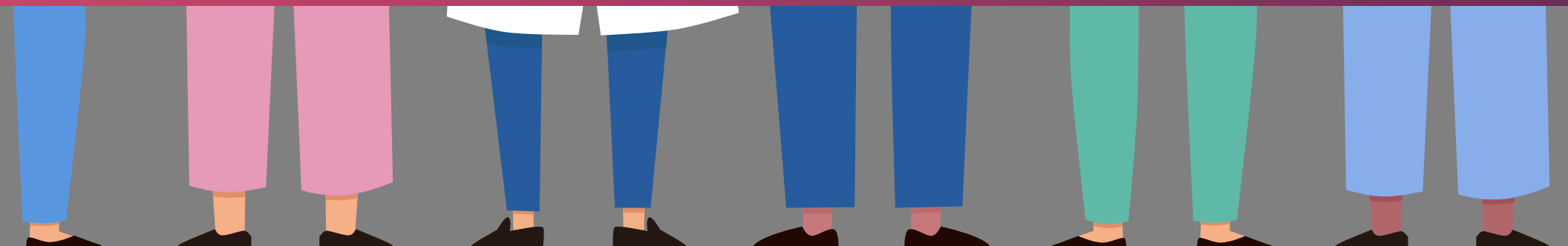




# Webinars for the Front Line

Social Work, Dietary, Activities, Certified Nurse Aides

*All sessions will be held as live webinars and will be recorded for on-demand access.  
Visit [webinars.hcam.org](http://webinars.hcam.org) for more details.*



**SOCIAL WORK**

**DIETARY**

**ACTIVITIES**

**CNA**

1

2

3

4

# Inspire. Educate.

After the year we've had, don't you think your staff deserve some recognition, inspiration and knowledge? Register your staff for our upcoming education series devoted to social work, dietary, and activity professionals as well as your CNAs! More details are available at [webinars.hcam.org](http://webinars.hcam.org).

## **Economical!**

Courses are only \$25 each for HCAM/MCAL members!



## **Save with a BUNDLE**

Save \$10 per session with bundle pricing! Buy the full series for only \$165!



## **Flexible!**

Courses are available on the scheduled date for live participation, and will be recorded for on-demand viewing for greater flexibility.



# Social Work Series

Note: A subset of the series is also appropriate for assisted living staff. There is an assisted living specific bundle available [HERE](#).

## 1. CMS Phase 3: The Nuts & Bolts of Cultural Competency, Part 1

CE Available: SW, RN, NHA

Tuesday, February 2 | 3:30 - 5:00 pm ET

[Register Now](#)

## 2. CMS Phase 3: The Nuts & Bolts of Cultural Competency, Part 2

CE Available: SW, RN, NHA

Tuesday, February 9 | 3:30 - 5:00 pm ET

[Register Now](#)

## 3. Creating Person-Centered Care Plans

CE Available: SW, RN, NHA, AFC, CALD

Tuesday, February 23 | 3:30 - 4:30 pm ET

[Register Now](#)

## 4. The Common Sense Approach to Abuse and Neglect

CE Available: SW, RN, NHA, AFC, CALD

Tuesday, March 2 | 3:30 - 4:30 pm ET

[Register Now](#)

## 5. New CMS Changes to Immediate Jeopardy Policy

CE Available: SW, RN, NHA

Tuesday, March 9 | 3:30 - 5:00 pm ET

[Register Now](#)

## 6. PASRR

CE Available: SW, NHA, RN

Tuesday, March 16 | 10:00 - 11:00 am ET

[Register Now](#)

## 7. Non-Pharmacologic Approaches to PTSD

CE Available: SW, NHA

Tuesday, March 30 | 3:30 - 4:30 pm ET

[Register Now](#)

## 8. Behavioral Health Services

CE Available: SW, NHA

Tuesday, April 6 | 3:30 - 4:30 pm ET

[Register Now](#)

## 9. Pain Management

CE Available: SW, NHA

Tuesday, April 13 | 3:30 - 4:30 pm ET

[Register Now](#)

## 10. Defensive Documentation for the LTC Professional

CE Available: SW, RN, NHA, CAP, RD, CDM

Tuesday, April 20 | 12:00 - 1:00 pm ET

[Register Now](#)

## 11. The 11 Things You Can Control Every Day of Your Life

CE Available: SW, RN, NHA, AFC, CALD, CAP, RD, CDM

Tuesday, May 4 | 12:00 - 1:00 pm ET

[Register Now](#)

# BUNDLE

Buy the full bundle and save! Act Now - this bundle is only available through February 1!

[Register Now](#)

# Dietary Series

Note: A subset of the series is also appropriate for assisted living staff. There is an assisted living specific bundle available [HERE](#).

## 1. International Dysphagia Diet Standardization Initiative Part 1

CE Available: RD, CDM

Tuesday, February 2 | 1:30 - 2:30 pm ET

[Register Now](#)

## 2. How to Enhance Food to Reduce Use of Supplements

CE Available: RD, CDM

Tuesday, February 9 | 1:30 - 2:30 pm ET

[Register Now](#)

## 3. International Dysphagia Diet Standardization Initiative Part 2

CE Available: RD, CDM

Tuesday, February 23 | 1:30 - 2:30 pm ET

[Register Now](#)

## 4. Enhance Your Dining Program to Improve Resident Satisfaction

CE Available: RD, CDM

Tuesday, March 2 | 1:30 - 2:30 pm ET

[Register Now](#)

## 5. Picture This! A Visual Journey Through Dining Best Practices

CE Available: RD, CDM

Tuesday, March 9 | 1:30 - 2:30 pm ET

[Register Now](#)

## 6. Implications of Lab Values in the Geriatric Population

CE Available: RD, CDM

Tuesday, March 16 | 1:30 - 2:30 pm ET

[Register Now](#)

## 7. Regulation Round Up - Know Your Nutrition Related F-Tags

CE Available: RD, CDM

Tuesday, March 30 | 1:30 - 3:00 pm ET

[Register Now](#)

## 8. Dining Changes Due to COVID

CE Available: RD, CDM

Tuesday, April 6 | 1:30 - 3:00 pm ET

[Register Now](#)

## 9. Combating Malnutrition in the Elderly

CE Available: RD, CDM

Tuesday, April 13 | 1:30 - 3:00 pm ET

[Register Now](#)

## 10. Defensive Documentation for the LTC Professional

CE Available: RD, CDM, NHA, SW, CAP, RN

Tuesday, April 20 | 12:00 - 1:00 pm ET

[Register Now](#)

## 11. The 11 Things You Can Control Every Day of Your Life

CE Available: SW, RN, NHA, AFC, CALD, CAP, RD, CDM

Tuesday, May 4 | 12:00 - 1:00 pm ET

[Register Now](#)

# BUNDLE

Buy the full bundle and save! Act Now - this bundle is only available through February 1!

[Register Now](#)

# Activity Series

Note: A subset of the series is also appropriate for assisted living staff. There is an assisted living specific bundle available [HERE](#).

## 1. Activity Salad Bowl: Serving All, Part 1

CE Available: CAP, RN, NHA, AFC, CALD  
Tuesday, February 2 | 10:00 - 11:30 am ET

[Register Now](#)

## 2. Activity Salad Bowl: Serving All, Part 2

CE Available: CAP, RN, NHA, AFC, CALD  
Tuesday, February 9 | 10:00 - 11:30 am ET

[Register Now](#)

## 3. “I’m Only Here for Therapy” What to Do for Short Term Residents

CE Available: CAP, NHA  
Tuesday, February 23 | 10:00 - 11:00 am ET

[Register Now](#)

## 4. Snoezelen - The Multi-Sensory Approach to Care

CE Available: CAP, NHA, AFC, CALD  
Tuesday, March 2 | 10:00 - 11:00 am ET

[Register Now](#)

## 5. Meeting Residents’ Psychosocial Needs During a Pandemic

CE Available: CAP, NHA, AFC, CALD  
Tuesday, March 9 | 10:00 - 11:30 am ET

[Register Now](#)

## 6. Winning Activities: Beyond the Basics

CE Available: CAP, RN, NHA, AFC, CALD  
Tuesday, March 16 | 3:30 - 4:30 pm ET

[Register Now](#)

## 7. Activity Interventions for Challenging Behavior

CE Available: CAP, NHA  
Tuesday, March 30 | 10:00 - 11:00 am ET

[Register Now](#)

## 8. Addressing Distress Through Meaningful Activities for Residents with Dementia

CE Available: CAP, NHA  
Tuesday, April 6 | 10:00 - 11:30 am ET

[Register Now](#)

## 9. CMS Surveyor Guidance: Activities

CE Available: CAP, RN, NHA  
Tuesday, April 13 | 10:00 - 11:00 am ET

[Register Now](#)

## 10. Defensive Documentation for the LTC Professional

CE Available: SW, RN, NHA, CAP, RD, CDM  
Tuesday, April 20 | 12:00 - 1:00 pm ET

[Register Now](#)

## 11. The 11 Things You Can Control Every Day of Your Life

CE Available: SW, RN, NHA, AFC, CALD, CAP, RD, CDM  
Tuesday, May 4 | 12:00 - 1:00 pm ET

[Register Now](#)

# BUNDLE

Buy the full bundle and save! Act Now - this bundle is only available through February 1!

[Register Now](#)

# Certified Nurse Aide Series

Note: All sessions in this series are also applicable to assisted living resident care aids.

## 1. Communication Enhanced: A Workshop in Enhancing Your Skills

CE Available:

Wednesday, February 3 | 6:00 - 7:00 pm ET

[Register Now](#)

## 2. Organization: Run Your Day or It Runs You

CE Available:

Wednesday, March 3 | 12:00 - 1:00 pm ET

[Register Now](#)

## 3. Dementia Communication

CE Available:

Wednesday, April 7 | 6:00 - 7:00 pm ET

[Register Now](#)

## 4. The 11 Things You Can Control Every Day of Your Life

CE Available: SW, RN, NHA, AFC, CALD, CAP, RD, CDM

Tuesday, May 4 | 12:00 - 1:00 pm ET

[Register Now](#)

## 5. Working With Difficult Families and Residents

CE Available:

Wednesday, May 5 | 12:00 - 1:00 pm ET

[Register Now](#)

## 6. Documentation and Reportable Issues

CE Available:

Wednesday, June 2 | 6:00 - 7:00 pm ET

[Register Now](#)

## 7. Bullying Among Older Adults: Not Just a Playground Problem

CE Available:

Wednesday, July 14 | 12:00 - 1:00 pm ET

[Register Now](#)

## 8. Pain Management Strategies CNAs Can Implement

CE Available:

Wednesday, August 4 | 6:00 - 7:00 pm ET

[Register Now](#)

## 9. Creating a Culture of Customer Service

CE Available:

Wednesday, October 6 | 12:00 - 1:00 pm ET

[Register Now](#)

## 10. Feeding/Providing Fluids Using Infection Control

CE Available:

Wednesday, November 3 | 6:00 - 7:00 pm ET

[Register Now](#)

## 11. Seize the Day! Getting Residents Up and Out of Bed

CE Available:

Wednesday, December 8 | 12:00 - 1:00 pm ET

[Register Now](#)

# BUNDLE

Buy the full bundle and save! Act Now - this bundle is only available through February 2!

[Register Now](#)